

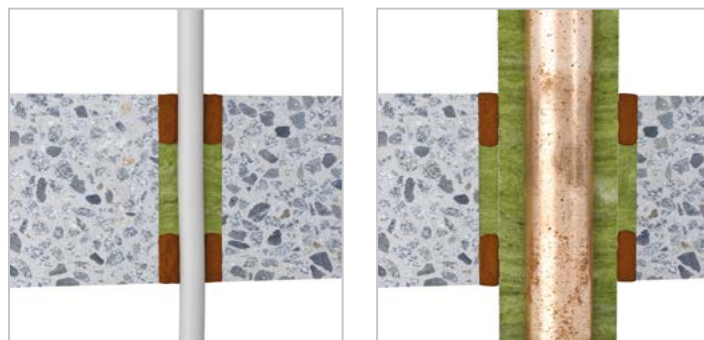
# ROKU® System AC Fire Protection Putty

## Fire resistance rating:

EI 90 / 120 / 180 / 240 according to EN 13501

## Approvals:

Europe: ETA-14/0014, ETA-14/0017



## Description

Das ROKU® System AC Fire Protection Putty is used for the sealing of construction joints, cable and pipe insulation in solid walls, drywall partitions and solid floors. The system is characterized by a high fire resistance rating of up to 240 minutes.

## Applications

- Sealing of building and connecting joints in drywall partitions and solid components
- Sealing of single cables with max. Ø 21 mm
- Sealing of single cables with max. Ø 80 mm, telecommunications cables with max. Ø 21 mm or cable bundles with max. Ø 100 mm
- Copper pipes with max. Ø 54 mm insulated with mineral wool or synthetic rubber
- ALU-PEX pipes up to max. Ø 75 mm
- Steel and stainless steel pipes up to max. Ø 219 mm insulated with mineral wool insulation and max. Ø 165 mm with synthetic rubber insulation
- Geberit Mepla pipes up to max. Ø 75 mm with synthetic rubber insulation
- Plastic pipes up to max. Ø 32 mm

## Advantages

- Easy installation and subsequent installation
- Dripless installation
- High flexibility
- Fire resistance rating up to 240 Min.

## Supplied form

ROKU® AC Fire Protection Putty			Accessories	
Supplied form	Unit (ml)	Art.-No.	Description	Art.-No.
Cartridge (bagged goods)	310 ml	0305310060	Label	0750050060
Cartridge (bagged goods)	600 ml	on request		

## Online



All approvals can be downloaded at  
[www.kuhn-brandschutz.com/systeme/roku-system-ac](http://www.kuhn-brandschutz.com/systeme/roku-system-ac)  
 or via the QR-Code.

## Technical data

<b>Suitable subsoils</b>	<ul style="list-style-type: none"> <li>■ Solid walls ≥ 150 mm</li> <li>■ Drywall partitions ≥ 100 mm</li> <li>■ Solid floors ≥ 150 mm</li> </ul>
<b>Depth of the sealing</b>	<ul style="list-style-type: none"> <li>■ 25 mm one-sided or double-sided depending on application</li> </ul>
<b>Suitable insulations</b>	<ul style="list-style-type: none"> <li>■ Mineral fibre or stone wool ≥ 40 kg/m<sup>3</sup> gross density</li> <li>■ Synthetic rubber insulation</li> </ul>
<b>Suitable installations</b>	<ul style="list-style-type: none"> <li>■ Connection joints</li> <li>■ ALU-PEX pipes</li> <li>■ Building joints</li> <li>■ Single cables</li> <li>■ Geberit Mepla pipes</li> <li>■ Cable bundles</li> <li>■ Plastic pipes</li> <li>■ Metal pipes with mineral fibre</li> <li>■ Metal pipes with synthetic rubber insulation</li> <li>■ Telecommunication cables</li> </ul>

## Assembly possibilities

