

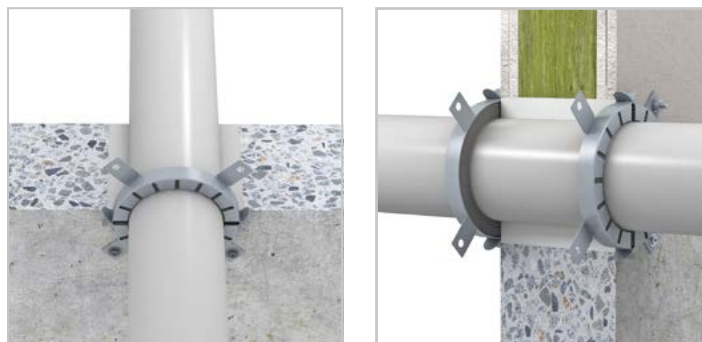
ROKU® System AWM II

Fire resistance rating:

EI 90 / 120 / 240 according to EN 13501

Approvals:

Europe: ETA-11/0208, CR 14318



Description

The ROKU® System AWM II consists of a solid metal sleeve which is equipped with several layers of the high performance intumescent material „ROKU® Strip“. In the event of a fire, the intumescent material expands with high pressure and thus seals the opening hermetically against flames and smoke. For wall installations one pipe collar on each side of the wall and for floor installations one collar on the underside of the floor must be provided.

Applications

- Sealing of plastic pipes up to max. 400 mm outside diameter in solid walls, drywall partitions and solid floors
- Up to Ø 160 mm the assembly in the ROKU® System MFS Combined Penetration Seal and up to Ø 110 mm the assembly in the ROKU® System FPCM is possible
- Georg Fischer COOL-FIT could be sealed up to Ø ≤ 315 mm

Advantages

- Very low installation height of the collar
- Suitable for the application in wet and humid areas
- Easy and excellent usability

Supplied form

AWM II fire protection collar				Accessories			
Diameter (mm)	Art.-No.	Diameter (mm)	Art.-No.	Diameter (mm)	Art.-No.	Article description	Art.-No.
32	0705000320	125	0705001250	280	0705002800	Mounting kit Ø 32-50 mm	0707002000
40	0705000400	140	0705001400	300	0705003000	Mounting kit Ø 63-125 mm	0707002020
50	0705000500	160	0705001600	315	0705003150	Mounting kit Ø 140-160 mm	0707002030
63	0705000630	180	0705001800	355	0705003550	Mounting kit Ø 180-200 mm	0707002040
75	0705000750	200	0705002000	400	0705004000	Mounting kit Ø 225-250 mm	0707002050
90	0705000900	225	0705002250			Mounting kit Ø 280-400 mm	0707002060
110	0705001100	250	0705002500			Label	0750050060

Online



All approvals can be downloaded at

www.kuhn-brandschutz.com/systeme/roku-system-awm-ii

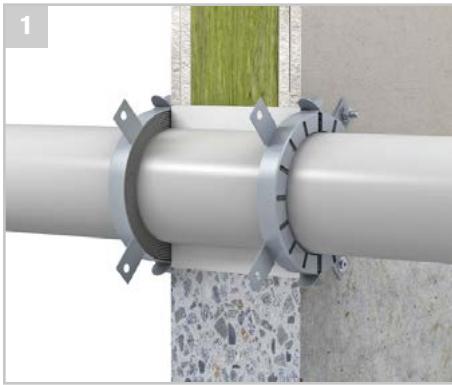
or via the QR-Code.

Technical data

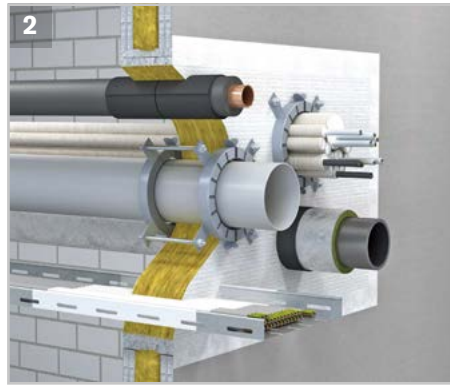
Max. Outside diameter	400 mm																		
Suitable subsoils	<ul style="list-style-type: none"> ■ Solid walls ≥ 100 mm ■ Penetration seals ≥ 2 x 50 mm 						<ul style="list-style-type: none"> ■ Drywall partitions ≥ 100 mm ■ Shaft walls ≥ 2 x 20 mm 						<ul style="list-style-type: none"> ■ Solid floors ≥ 150 mm 						
Suitable pipes	<ul style="list-style-type: none"> ■ Georg Fischer COOL-FIT ■ PE-HD ■ PP ■ PVC 																		

Collar dimensions (mm)	32	40	50	63	75	90	110	125	140	160	180	200	225 MAX	250 MAX	280 MAX	300 MAX	315 MAX	350 MAX	400 MAX
Inner diameter (mm)	36	44	54	67	79	94	114	129	144	165	184	204	239	264	289	314	328	364	414
Outside diameter (mm)	50	58	68	94	106	132	155	172	200	220	264	284	328	353	378	403	417	453	503
Component height (mm)	26	26	26	26	26	26,6	26,6	40	40	40	40	40	50	50	50	50	50	50	50
No. of fixing tabs (pcs)	2	2	2	4	4	4	4	4	6	6	8	8	10	10	12	12	12	12	12

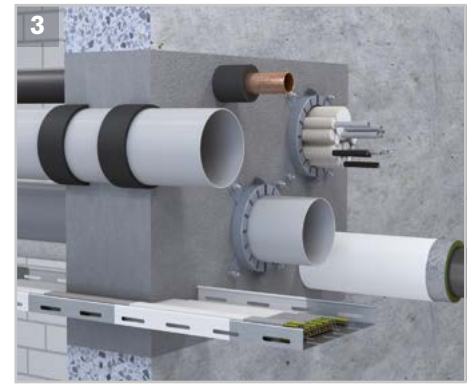
Assembly possibilities



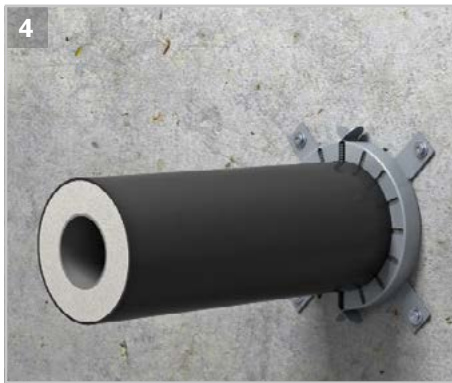
For wall installations one pipe collar on each side of the wall and for floor installations one collar on the underside of the floor must be provided.



The AWM II collar can be used in the ROKU® System MFS Combined Penetration Seal for plastic wastewater pipes ≤ 160 mm and for individually or grouped electrical lines.



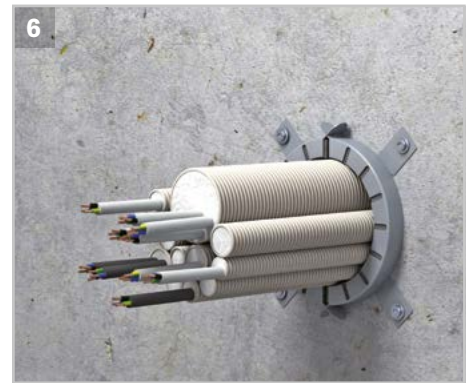
The application in the ROKU® System FPCM is possible.



The Georg Fischer system COOL-FIT can be sealed with the collar AWM II in the dimensions ≤ 315 mm.



The collar can be installed in solid floors ≥ 150 mm.



Can be used in the ROKU® System AWM II KS.