

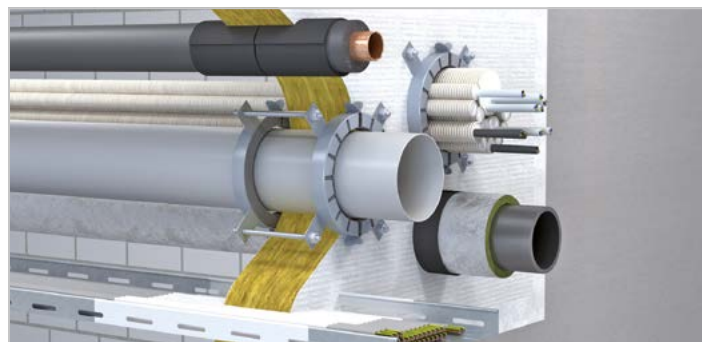
ROKU® System MFS

Fire resistance rating:

EI 90 / 120 according to EN 13501

Approvals:

Europe: ETA-15/0014, CR 210006105-1



Description

The ROKU® System MFS Combined Penetration Seal consists of the high performance coating ROKU® MFC 200 and two coated ROKU® MFP mineral fibre panels. Plastic pipes are sealed with the ROKU® AWM II collar. The insulation of copper pipes with synthetic rubber insulation or metal pipes with mineral wool insulation is covered with ROKU® Strip (Thickness 1,5 mm, Width 100 mm). Cables or electrical lines are covered with ROKU® MFC 200 ablation coating on both sides of the sealing at a length of at least 15 cm and a thickness of 1 mm.

Applications

- Sealing of electrical lines up to max. 80 mm diameter in solid walls, drywall partitions and solid floors
- Sealing of electric installation pipes with and without cables up to max. 63 mm single diameter or 125 mm bundle diameter
- Sealing of combustible wastewater pipes (PE, PP, PVC) up to $\varnothing \leq 160$ mm
- Copper pipes insulated with synthetic rubber up to max. $\varnothing 88,9$ mm
- Metal pipes up to $\varnothing 160$ mm insulated with mineral fibre (Thickness 20 to 50 mm)

Advantages

- Easy installation and subsequent installation
- High flexibility

Supplied form

ROKU® System MFS Penetration Seal		Accessories	
Article description	Art.-No.	Article description	Art.-No.
ROKU® MFC 200 fire protection coating, 6 kg, airless version	0720000200	Label	0750050060
ROKU® MFC 200 fire protection coating, 12,5 kg, airless version	0720000201		
ROKU® MFC 200 fire protection coating, 400 g, thick version	0720000204		
ROKU® MFC 200 fire protection coating, 6 kg, thick version	0720000203		
ROKU® MFC 200 fire protection coating, 12,5 kg, thick version	0720000202		
ROKU® MFP 200 mineral fibre panel, 1000 x 600 x 50 mm, pre-coated	0720000205		
ROKU® MFP 200 mineral fibre panel, 1000 x 600 x 50 mm, final coated	0720000206		
AWM II fire protection collar, $\varnothing 32 - 160$ mm	see page 8		
ROKU® Strip fire protection wrap, 10000 x 100 x 1,5 mm	see page 22		

Online



All approvals can be downloaded at
www.kuhn-brandschutz.com/systeme/roku-system-mfs-penetration-seal
 or via the QR-Code.

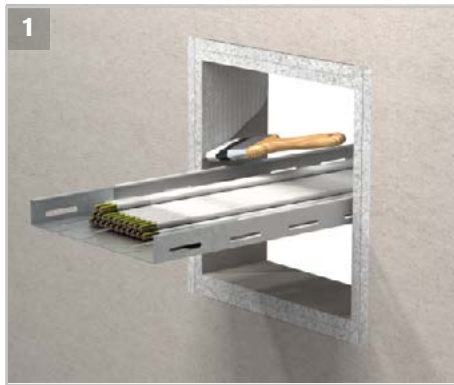
Technical data

Max. Seal size	<ul style="list-style-type: none"> ■ Wall: 2200 x 1100 mm ■ Floor: 1000 mm width x ∞ mm length 		
Suitable subsoils	<ul style="list-style-type: none"> ■ Solid walls ≥ 100 mm 	<ul style="list-style-type: none"> ■ Drywall partitions ≥ 94 mm 	<ul style="list-style-type: none"> ■ Solid floors ≥ 150 mm
Suitable insulations	<ul style="list-style-type: none"> ■ Synthetic rubber insulation with 11 to 41,5 mm insulation thickness ■ Mineral fibre or stone wool with 20 to 60 mm insulation thickness 		
Suitable installations	<ul style="list-style-type: none"> ■ Electric installation pipes made of PVC or polyolefin with max. Ø 63 mm (single) or with max. Ø 125 mm (bundles) ■ Copper pipes up to max. Ø 88,9 mm ■ Metal pipes up to max. Ø 160 mm ■ PE, PP and PVC up to max. Ø 160 mm 		
		<ul style="list-style-type: none"> ■ EI 90/120 U/C ■ EI 90/120 C/U ■ EI 90/120 C/U ■ EI 90/120 U/U 	

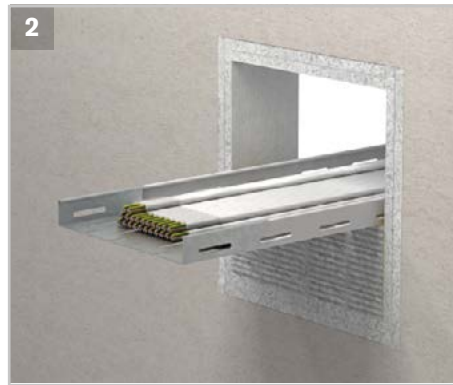
Dimensions of the AWM II collar

Collar dimensions (mm)	32	40	50	63	75	90	110	125	140	160
Inner diameter (mm)	36	44	54	67	79	94	114	129	144	165
Outside diameter (mm)	50	58	68	94	106	132	155	172	200	220
Component height (mm)	26	26	26	26	26	26,6	26,6	40	40	40
No. of fixing tabs (pcs)	2	2	2	4	4	4	4	4	6	6

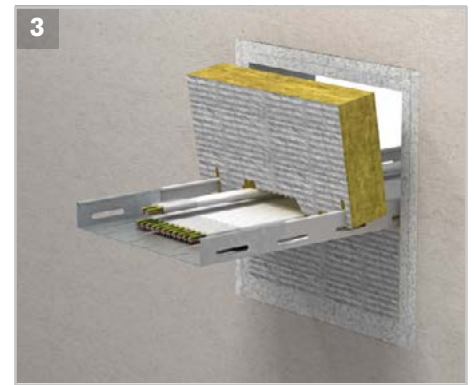
Assembly possibilities



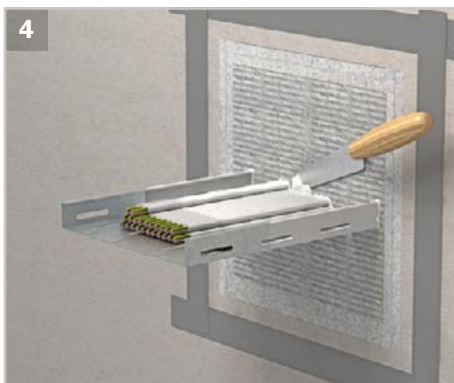
1 Clean aperture and remove all loose parts. Cover the surface of the aperture with ROKU® MFC 200 coating.



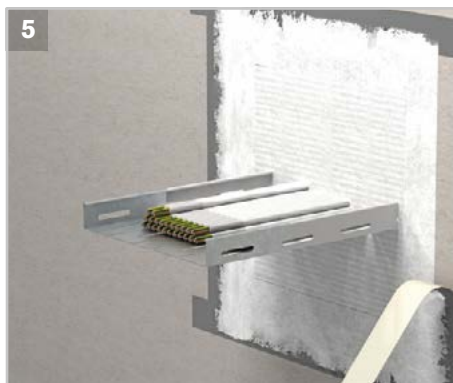
2 Coat cables and cable trays with ROKU® MFC 200 and adjust ROKU® MFP mineral fibre panels on both sides of the wall/floor.



3 Fill the aperture completely and fill remaining spaces with mineral wool previously immersed in coating.



4 Mask the aperture 2 cm bigger than the aperture size, fill all remaining spaces with ROKU® MFC 200 coating.



5 Coat the complete surface inside the mask with ROKU® MFC 200 to a total thickness of at least 1 mm.



6 Tear off the adhesive tapes and apply the label.